

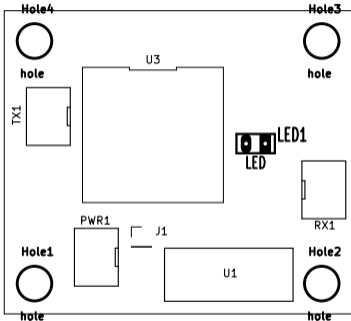
ESP32C3には2.54mm pitch pin header  
基板側にはソケット

Sheet: /  
File: ESP32C3toSNTC.kicad\_sch

**Title:** ESP32C3toSNTC by ik-gadgets

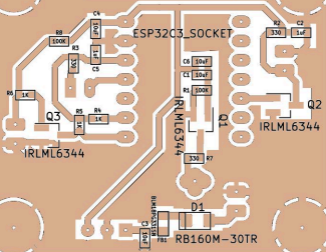
Size: A4 Date:  
KiCad E.D.A. kicad (6.0.10)

**Rev:**  
Id: 1/1

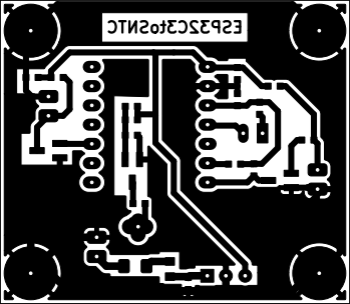


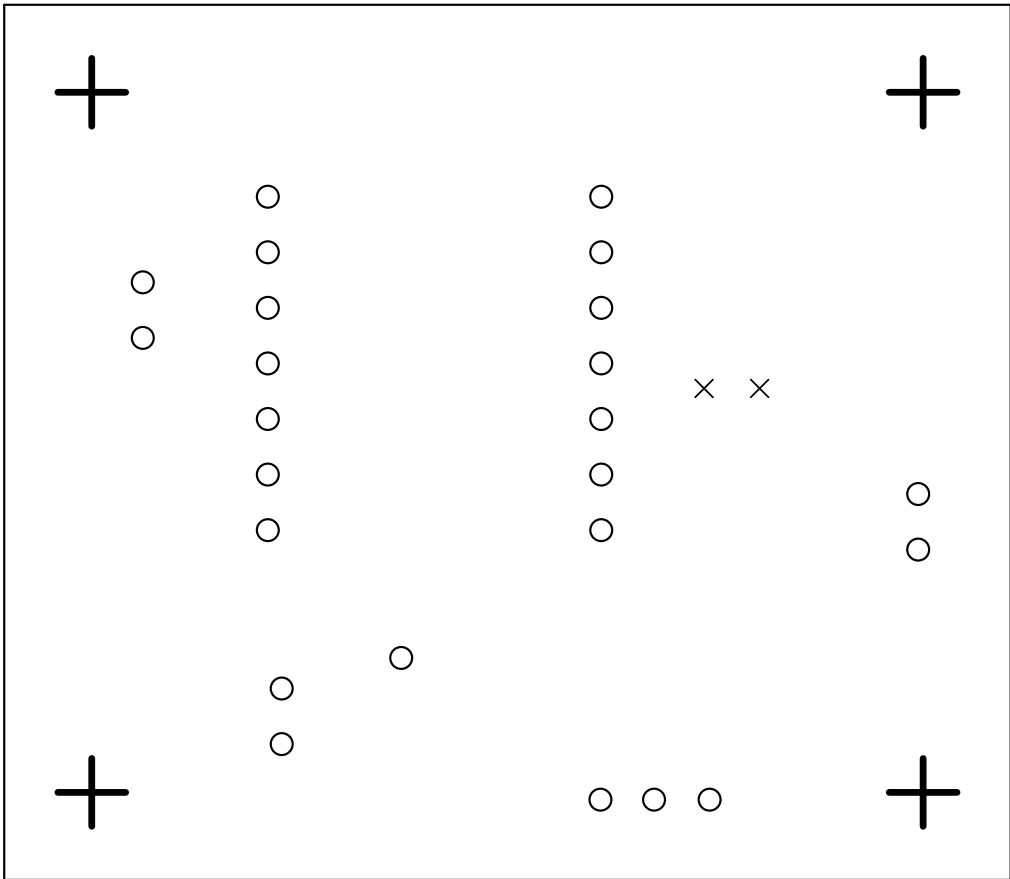
# ESP32C3toSNTC

ESP32C3\_SOCKET



ESP32C3402MTC





Drill Map:

- × 0.813mm / 0.0320" (2 holes)
- 1.000mm / 0.0394" (24 holes)
- + 3.100mm / 0.1220" (4 holes)