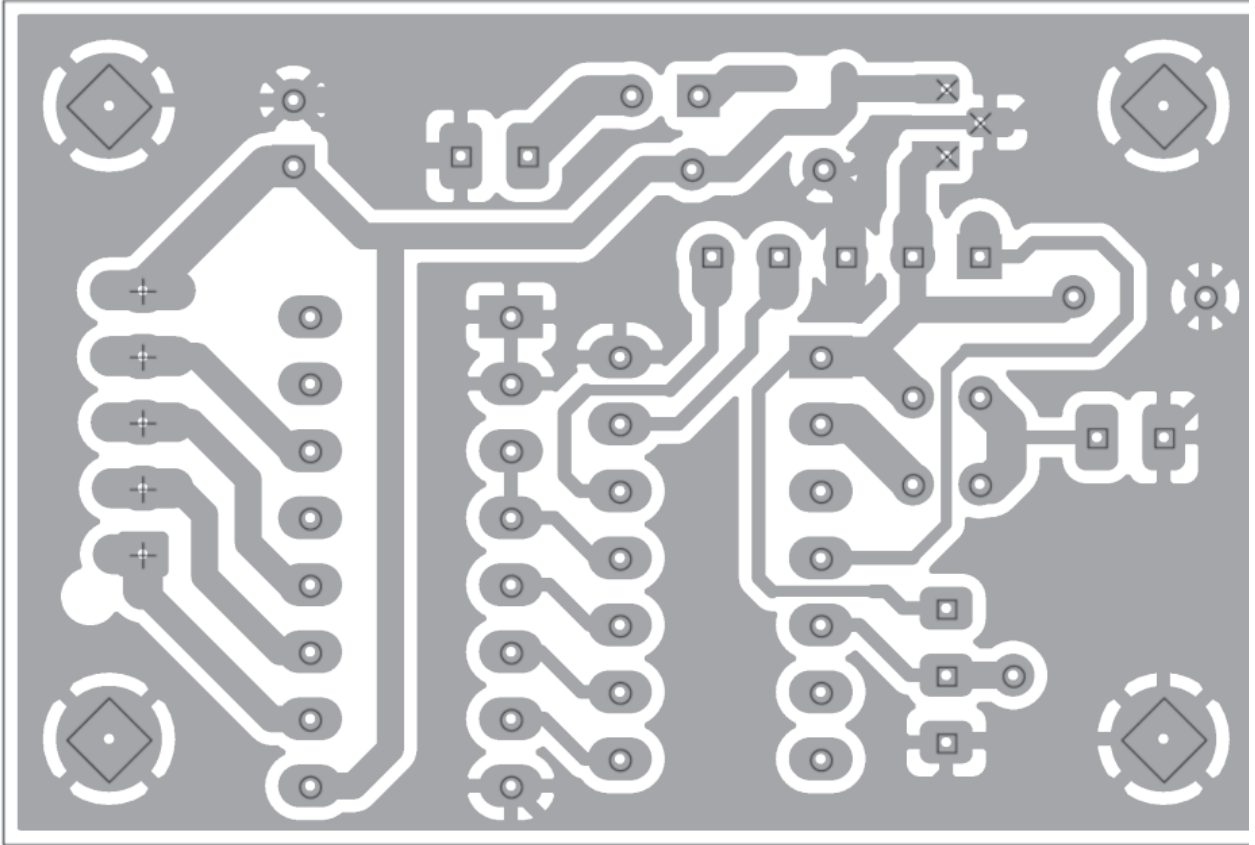


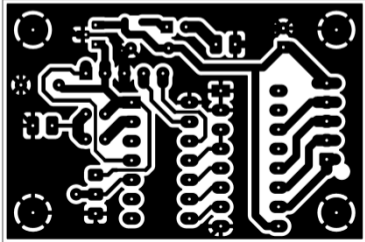
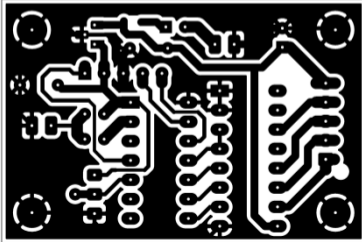
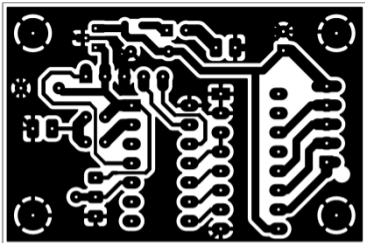
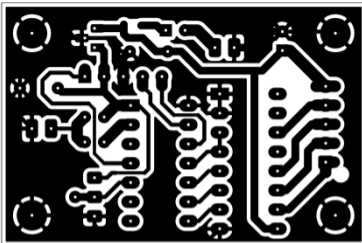
SPDRV2 : Slow Point Drive Circuit by ik-gadgets

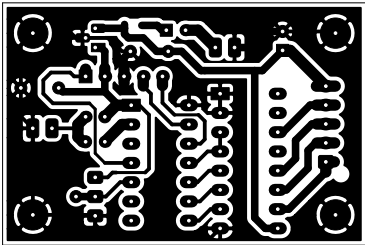


Drill Map:

×	0.75mm	/	0.030"	(3 holes)
○	0.80mm	/	0.031"	(43 holes)
+	0.95mm	/	0.037"	(5 holes)
□	1.00mm	/	0.039"	(12 holes)
◇	3.20mm	/	0.126"	(4 holes)

Bottom View





Hole3



U1

SPDRV2



C2

P1

R2



IN1

VR1



Hole2



BLURLEPG33LSH D1



C1



A

V12

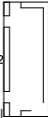


C4

Hole1



U2



P2



Hole4

IC1