

Hole1



Hole4



R7



D1



P2



IC1



P1



U1



Hole2



Hole3

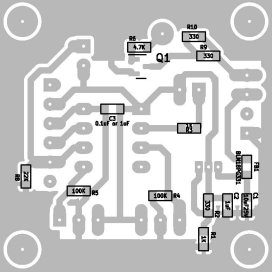


P3



P4





R3
4.7K

Q1

R10
330

R9
330

C3
0.1uF or 1uF

P1

R1
10K

R5
100K

R4
100K

R7
10K

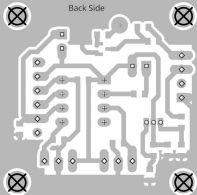
C2
100pF

C1
100pF

P1
100K

R8
10K

Back Side



Drill Map:

○	0.500mm	∕	0.0197"	(1 hole)
⊗	0.750mm	∕	0.0295"	(3 holes)
⊕	0.800mm	∕	0.0315"	(8 holes)
⊠	0.900mm	∕	0.0354"	(4 holes)
◇	1.000mm	∕	0.0394"	(16 holes)
⊠	3.048mm	∕	0.1200"	(4 holes)